

TOTAL NUMBER OF NEWLY REGISTERED COOPERATIVES

**By Region, By Type
January 1 to December 31, 2011**

REGION	CREDIT	CONSUMER	PRODUCER	MARKETING	SERVICE	MULTI-PURPOSE	ADVOCACY	AGRARIAN	DAIRY	FISHERMEN	HOUSING	ELECTRIC	WORKERS	TRANSPORT	FINANCIAL SERVICE	HEALTH SERVICE	WATER SERVICE	COOP BANK-SECONDARY	FEDERATION SECONDARY	FEDERATION TERTIARY	UNION-SECONDARY	GRAND TOTAL
REGION I	31	24	7	5	4	26								1					1			99
REGION II	56	9	13	28	4	6		1														117
CAR	24	21	8	11	1	2					1		2									70
REGION III	62	24	50	22	28	1		3	6				2	3					1		1	203
NCR	73	47	17	8	97	19	1			1	1		5	14					3			286
REGION IV	66	36	27	44	33	11	1	2	1	3			6	4	1		2		2			239
REGION V	19	5	18	4	6	2		1	2		1		2	1								61
REGION VI	22	11	9	12	2	3																59
REGION VII	16	7	4	1	3	10		1	4					1		1			1			49
REGION VIII	7	6	6	2	2	1			1													25
REGION IX	15	10	11		4	3	1	1		2												47
REGION X	22	16	15	8	11	2	1				2		3	2		1						83
REGION XI	41	25	16	14	25	1	1	1		2	1			1	1							129
REGION XII	43	10	25	11	15	1			1	1				3								110
CARAGA	14	23	27	4	5	4		1					1									79
ARMM	11	8	103	82	21					9		1										235
CENTRAL OFFICE												1						1		1		3
GRAND TOTAL	522	282	356	256	261	92	5	11	15	18	6	2	21	30	2	2	2	1	8	1	1	1,894

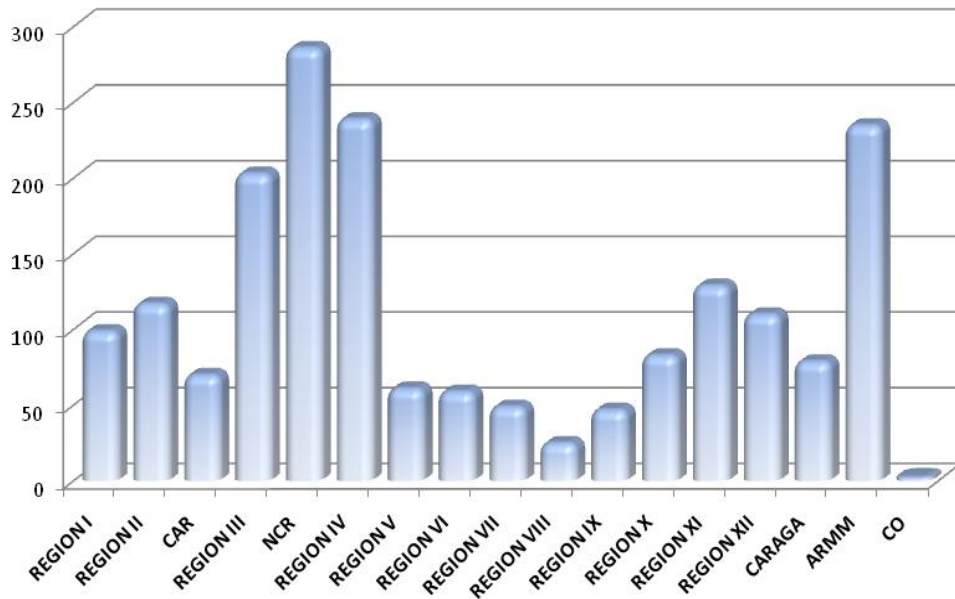
In 2011, the Cooperative Development Authority was able to register a total of 1,894 cooperatives, a 37.6% increase compared to 2010. The NCR posted the highest number of cooperatives registered for the said year with 286 newly registered cooperatives, followed by Region IV with 239 newly registered cooperatives.

ARMM registered 235 new cooperatives in the region in 2011, which is 658% higher compared to last year's figures. It is then followed by NCR with 129% increase.

Credit cooperatives contributed the largest number of new registrations (522) compared to other types.



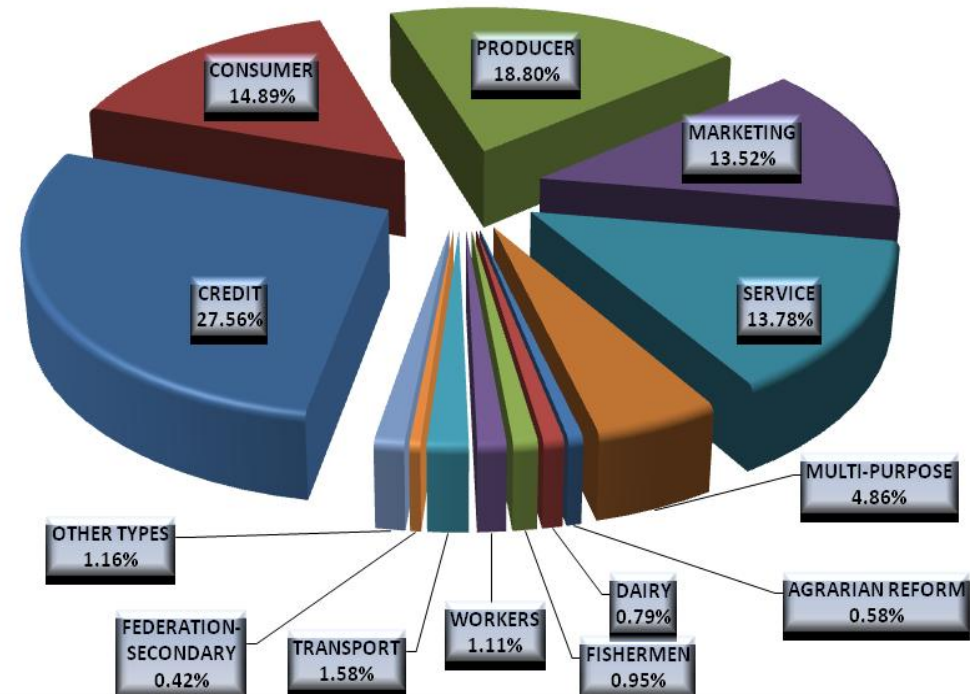
NUMBER OF NEWLY REGISTERED COOPERATIVES By Region January 1 – December 31, 2011



The National Capital Region has the most number of cooperatives registered in 2011 with a contribution of 15.10% to the total newly registered, which is then followed by Region IV with 12.62% contribution.

The high number of registered cooperatives in most of the regions for the year 2011 signify that cooperatives are gaining recognition especially in regions with high rate of poverty like ARMM.

NO. OF NEWLY REGISTERED COOPERATIVES By Type January 1 – December 31, 2011



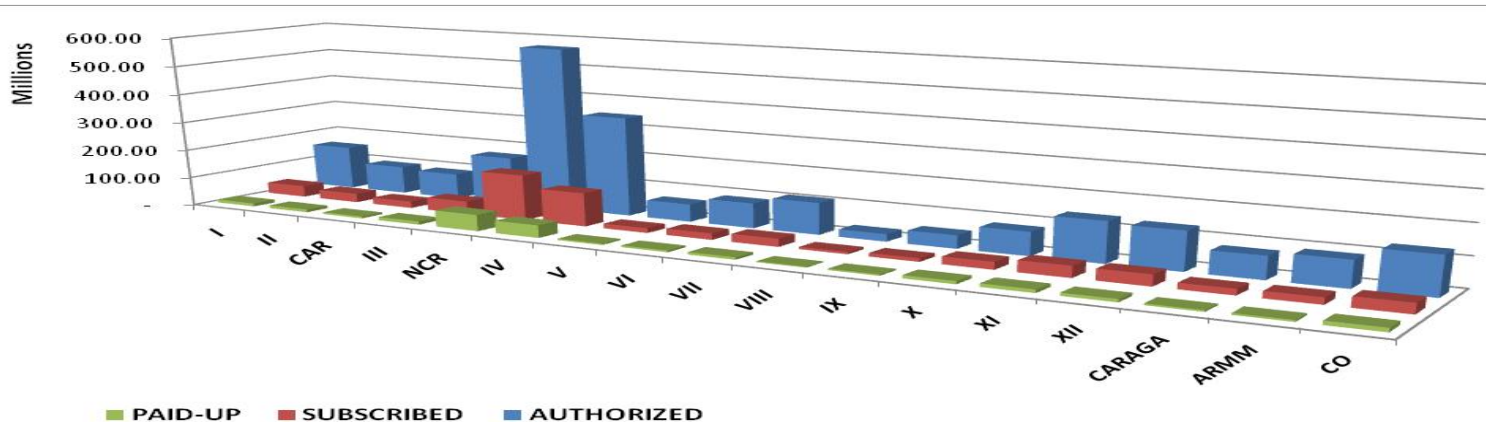
27.56% of cooperatives registered in 2011 are credit cooperatives. The Producers Cooperatives came in next with a total percentage of 18.80%. However, Marketing Cooperatives have the highest increase in growth rate posting 34.75% increase compared to 2010 newly registered coops.

CAPITAL STRUCTURE OF NEWLY REGISTERED COOPERATIVES

By Region, By Type
January 1 to December 31, 2011

REGION	CAPITALIZATION			% SUBSCRIBED CAPITAL VS. AUTHORIZED CAPITAL	% PAID-UP CAPITAL VS. SUBSCRIBED CAPITAL
	AUTHORIZED	SUBSCRIBED	PAID-UP		
I	153,065,600.00	39,582,800.00	10,706,000.00	25.86%	27.05%
II	97,062,000.00	31,260,400.00	10,082,610.00	32.21%	32.25%
CAR	89,279,600.00	23,475,800.00	6,675,600.00	26.29%	28.44%
III	167,599,600.00	44,740,300.00	11,214,950.00	26.69%	25.07%
NCR	569,815,542.56	158,174,003.57	56,630,058.39	27.76%	35.80%
IV	345,156,280.00	115,851,620.00	43,191,230.00	33.56%	37.28%
V	61,310,400.00	16,406,600.00	4,612,350.00	26.76%	28.11%
VI	86,092,400.00	21,955,600.00	5,948,175.00	25.50%	27.09%
VII	109,688,000.00	27,505,400.00	8,217,050.00	25.08%	29.87%
VIII	25,718,400.00	7,798,000.00	3,117,150.00	30.32%	39.97%
IX	45,100,000.00	11,754,100.00	4,508,201.12	26.06%	38.35%
X	79,999,680.00	25,533,320.00	10,125,643.45	31.92%	39.66%
XI	137,872,200.00	38,596,550.00	11,238,062.50	27.99%	29.12%
XII	130,432,434.56	37,655,100.00	9,941,650.00	28.87%	26.40%
CARAGA	76,251,600.00	20,434,500.00	5,274,475.00	26.80%	25.81%
ARMM	89,133,600.00	22,283,400.00	5,570,850.00	25.00%	25.00%
CENTRAL OFFICE	129,700,000.00	34,148,000.00	13,004,200.00	26.33%	38.08%
TOTAL	2,393,277,337.12	677,155,493.57	220,058,255.46	28.29%	32.50%

The 2011 newly registered cooperatives' Authorized capital amounted to 2.4 Billion Pesos, 28.29% of which was subscribed by the cooperatives and 32.5 % has been paid by the cooperative members.

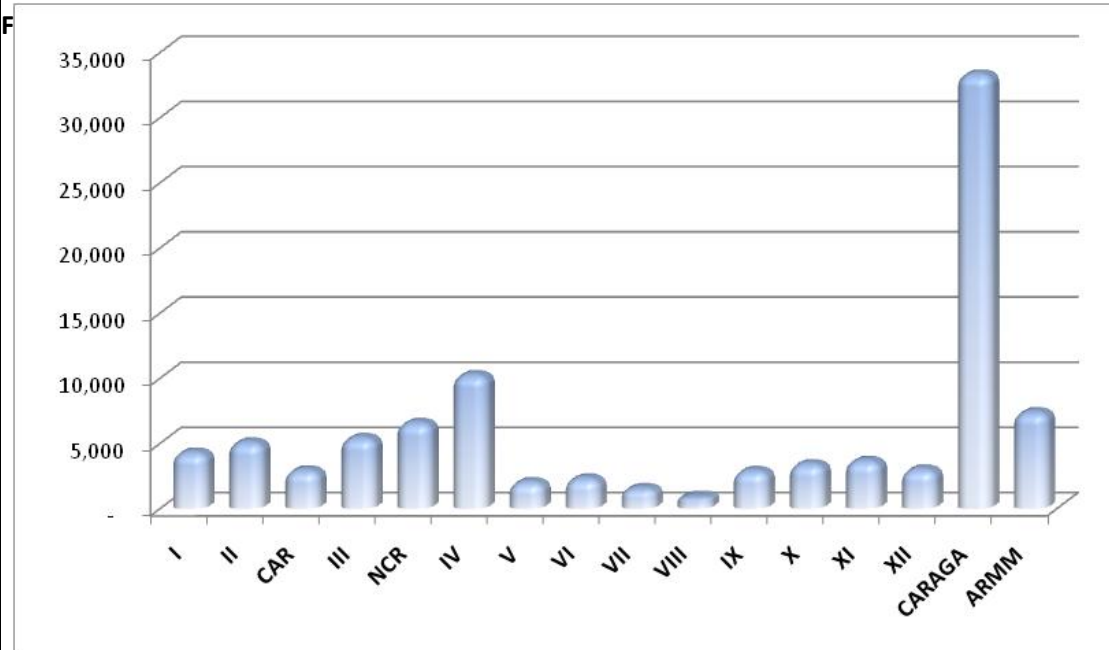


MEMBERSHIP OF NEWLY REGISTERED COOPERATIVES

By Region, By Type

January 1 to December 31, 2011

REGION	TOTAL MEMBERSHIP OF NEWLY REGISTERED COOPERATIVES	TOTAL NUMBER OF NEWLY REGISTERED COOPERATIVES	AVERAGE NUMBER OF MEMBERS PER COOPERATIVE
I	4,286	98	44
II	5,055	117	43
CAR	2,913	70	42
III	5,399	201	27
NCR	6,557	283	23
IV	10,220	237	43
V	2,020	61	33
VI	2,293	59	39
VII	1,540	48	32
VIII	904	25	36
IX	2,870	47	61
X	3,394	83	41
XI	3,643	129	28
XII	2,980	110	27
CARAGA	33,301	80	416
ARMM	7,376	235	31
TOTAL	94,751	1,883	50



The newly registered cooperatives generated a membership of 94,751, which is 0.95% higher than 2010.

1 Electric Cooperative in CARAGA registered with CDA in 2011 which contributed for the regions high membership generation.



TOTAL NUMBER OF REGISTERED COOPERATIVES
By Region, By Type
As of December 31, 2011

REGION	CREDIT	CONSUMER	PRODUCER	MARKETING	SERVICE	MULTI-PURPOSE	ADVOCACY	AGRARIAN REFORM	DAIRY	FISHERMEN	HOUSING	ELECTRIC	WORKERS	TRANSPORT	FINANCIAL SERVICE	HEALTH SERVICE	WATER SERVICE	COOP BANK-SECONDARY	FEDERATION-SECONDARY	FEDERATION-TERTIARY	UNION-SECONDARY	UNION-TERTIARY	INSURANCE-SECONDARY	GRAND TOTAL
I	139	102	17	20	20	958								1					9		3			1,269
II	148	18	25	53	21	482		1											6	1				755
CAR	112	56	18	22	16	473					1		2						5		6			711
III	242	62	156	73	133	1,300		3	6				2	4					20		4			2,005
NCR	371	141	25	15	291	1,222	1			1	1		5	14				1	26	2	12		1	2,129
IV	293	85	83	98	145	1,698	1	2	1	3			6	4	1		2		22		6			2,450
V	100	18	60	11	51	536		1	2		1		2	1					7		3			793
VI	80	28	30	47	15	1,113													18		1			1,332
VII	136	32	21	11	68	1,232		1	4					1		1			13		3			1,523
VIII	111	43	27	17	61	401			1										5					666
IX	44	28	29	10	17	600	1	1		2									9					741
X	154	50	57	45	56	1,050	1				2		3	2		1			14		2		1	1,438
XI	130	69	77	53	112	1,191	1	1		2	1			1	1				10		4			1,653
XII	96	25	48	34	68	721			1	1				3					9					1,006
CARAGA	92	73	102	23	22	718		1					1						8		2			1,042
ARMM	20	20	174	221	52	711				9									5		1			1,214
CENTRAL OFFICE					12													44	2	3		1	2	65
GRAND TOTAL	2,268	850	949	753	1,160	14,406	5	11	15	18	6	2	21	31	2	2	2	45	188	6	47	1	4	20,792

There are a total of 20,792 cooperatives registered in the Philippines as of December 31, 2011. It increased by 12.49% as compared to the previous year.

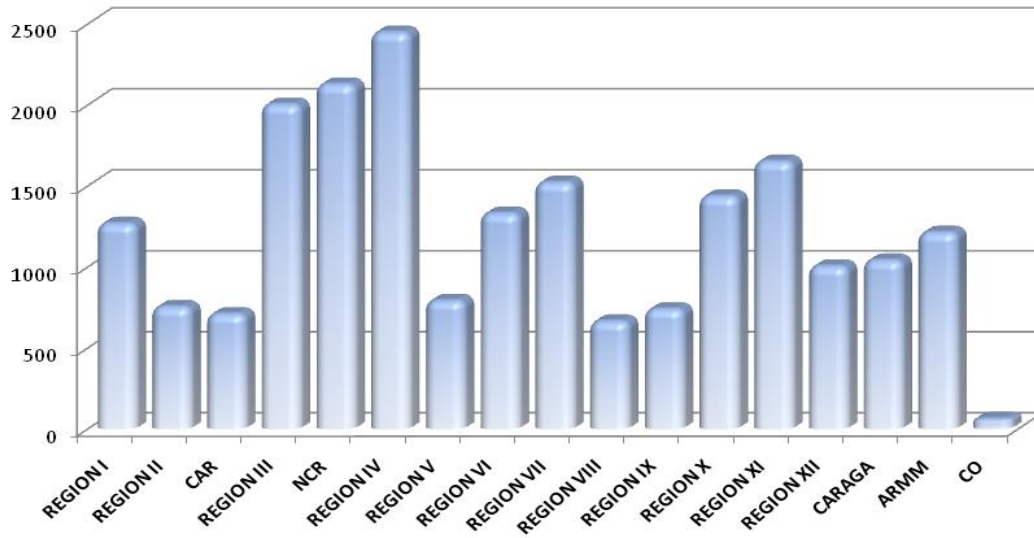
Region 4 has the most number of cooperatives with a total of 2,450 registered cooperatives.

ARMM has the highest growth rate from 2010 to 2011 projecting a 41.5% increase in the total number of registered cooperatives.

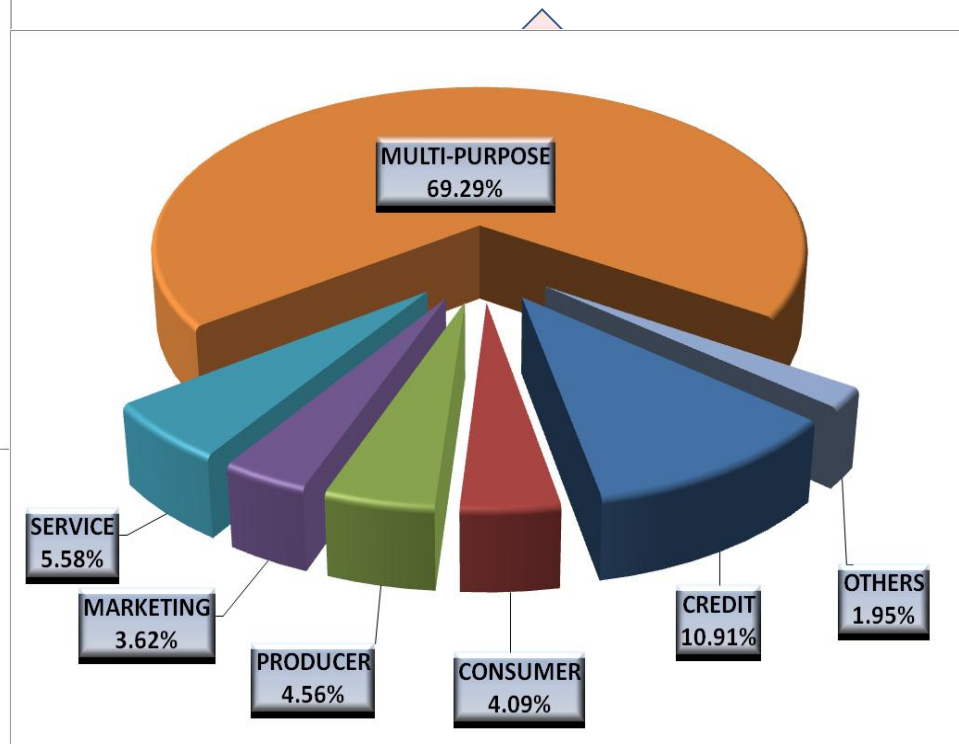
Meanwhile, the type of cooperative which has the highest growth rate in 2011 is the Marketing Cooperatives, with growth rate of 105.74% compared to 2010.



TOTAL NUMBER OF REGISTERED COOPERATIVES
By Region, By Type
As of December 31, 2011



Region IV contributed 11.78% to the total registered cooperatives as of December 31, 2011. NCR came in second with 10.24% contribution, followed by Region III with 9.64%.



Multi-purpose cooperatives dominated the total number of registered cooperatives contributing 69.29% of the total. It is followed by credit cooperatives which comprises 10.91% of the total registered and the remaining 19.80% are distributed among other types.

TOTAL ASSETS OF COOPERATIVES

By Region, By Category
As of December 31, 2011

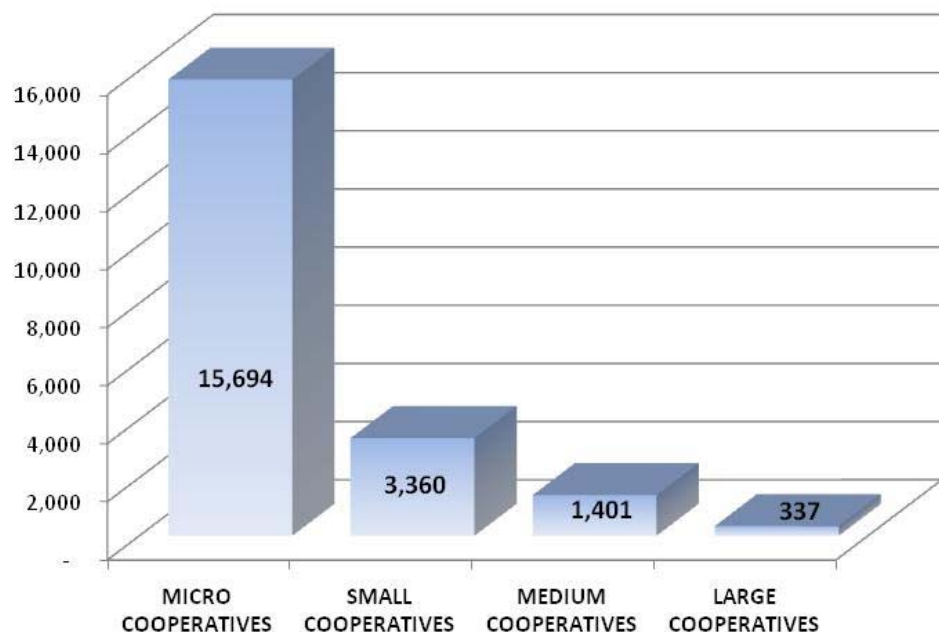
REGION	MICRO COOPERATIVES		SMALL COOPERATIVES		MEDIUM COOPERATIVES		LARGE COOPERATIVES		GRAND TOTAL	
	3 MILLION AND BELOW		MORE THAN 3 MILLION UP TO 15 MILLION		MORE THANK 15 MILLION UP TO 100 MILLION		MORE THAN 100 MILLION			
	NO. OF COOPS	AMOUNT OF ASSETS	NO. OF COOPS	AMOUNT OF ASSETS	NO. OF COOPS	AMOUNT OF ASSETS	NO. OF COOPS	AMOUNT OF ASSETS	NO. OF COOPS	AMOUNT OF ASSETS
I	1,110	614,564,086.55	115	766,871,820.38	34	1,119,569,069.50	10	1,816,890,100.81	1,269	4,317,895,077.24
II	563	312,521,070.13	119	656,964,042.20	65	2,354,208,415.65	8	1,361,085,998.50	755	4,684,779,526.47
CAR	516	361,045,477.66	132	793,119,932.74	49	2,386,753,427.99	14	3,873,773,417.63	711	7,414,692,256.02
III	1,575	756,218,206.21	283	2,129,131,826.68	120	3,372,064,816.52	27	6,053,315,101.54	2,005	12,310,729,950.94
NCR	1,409	833,332,294.12	386	2,933,017,981.47	275	10,445,709,397.30	59	41,341,763,058.38	2,129	55,553,822,731.27
IV	1,839	1,080,820,953.61	402	2,795,328,746.61	177	6,600,994,561.86	32	9,934,540,331.75	2,450	20,411,684,593.83
V	632	354,276,872.17	118	786,224,781.40	38	1,203,504,467.32	5	535,701,787.95	793	2,879,707,908.84
VI	946	571,267,701.80	248	1,803,329,686.95	125	4,610,029,937.04	13	2,166,805,856.52	1,332	9,151,433,182.31
VII	1,037	791,743,579.59	367	2,173,618,599.13	91	3,146,799,652.99	28	9,998,111,699.99	1,523	16,110,273,531.69
VIII	499	311,735,000.12	106	725,183,189.66	51	1,873,083,902.23	10	2,425,126,717.27	666	5,335,128,809.28
IX	589	359,109,438.88	92	646,668,782.41	53	1,991,088,009.20	7	2,276,952,434.28	741	5,273,818,664.78
X	1,091	672,025,214.54	264	1,601,314,375.40	66	2,474,470,997.39	17	8,695,163,482.13	1,438	13,442,974,069.45
XI	1,174	768,240,890.01	349	2,014,722,180.87	90	3,538,952,429.16	40	11,335,320,078.27	1,653	17,657,235,578.31
XII	718	409,714,840.73	192	1,358,562,971.99	81	2,805,471,084.02	15	3,955,740,114.77	1,006	8,529,489,011.51
CARAGA	836	452,732,726.60	148	997,648,614.60	55	1,724,170,103.03	3	472,739,506.59	1,042	3,647,290,950.81
ARMM	1,157	253,611,781.27	37	262,785,253.68	10	398,091,218.15	10	2,277,206,166.84	1,214	3,191,694,419.94
CENTRAL OFFICE	3	-	2	20,541,556.18	21	1,153,596,343.78	39	18,753,476,644.37	65	19,927,614,544.33
TOTAL	15,694	8,902,960,133.99	3,360	22,465,034,342.33	1,401	51,198,557,833.13	337	127,273,712,497.58	20,792	209,840,264,807.02

Of the 20,792 total registered cooperatives, the total cooperative assets amounted to 209.8 Billion Pesos as of Dec. 31, 2011, 60.7% of which large cooperatives assets, 24.4% are assets of medium cooperatives, 10.71% from small cooperatives, and 4.24% from micro-cooperatives.

In 2011, approximately 5.71% of Medium-Size Cooperatives have advanced into Large Cooperatives, 6.01 of Small-Size Cooperatives have advanced into Medium-Size Cooperatives, and 2.84 % of Micro-size Cooperatives have advanced into Small-sized Cooperatives.



NUMBER OF REGISTERED COOPERATIVES BY CATEGORY As of December 31, 2011

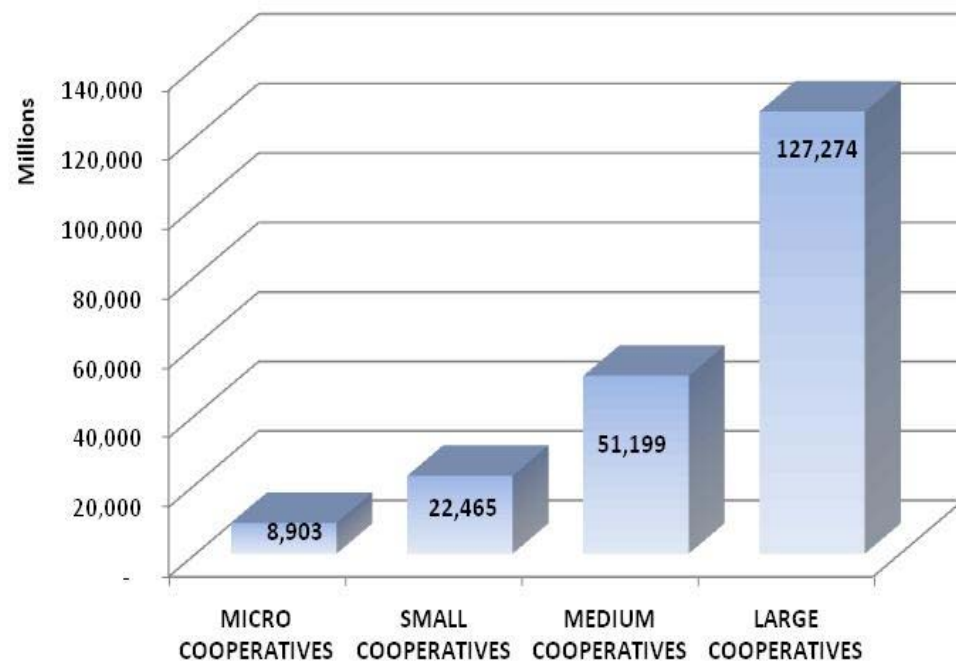


In terms of enterprise category, the relationship between the number of cooperatives and the total assets is inversely proportional.

The average asset of a micro cooperative is Php 567,284, Small cooperatives have an average asset of Php 6.7 million, medium cooperatives have an average asset of Php 36.5 million, and large cooperatives have an average asset of Php 378 million.

75.48% of the total registered cooperatives are categorized as micro-enterprise, 16.16% are categorized as small-enterprise, 6.74% are categorized as medium-enterprise and only 1.62% categorized as large-enterprise

TOTAL ASSETS COOPERATIVES BY CATEGORY (In million Pesos) January 1 – December 31, 2011



TOTAL COOPERATIVE MEMBERSHIP VS. 2007 PHILIPPINE POPULATION OF 18 YEARS OLD AND OVER By Region

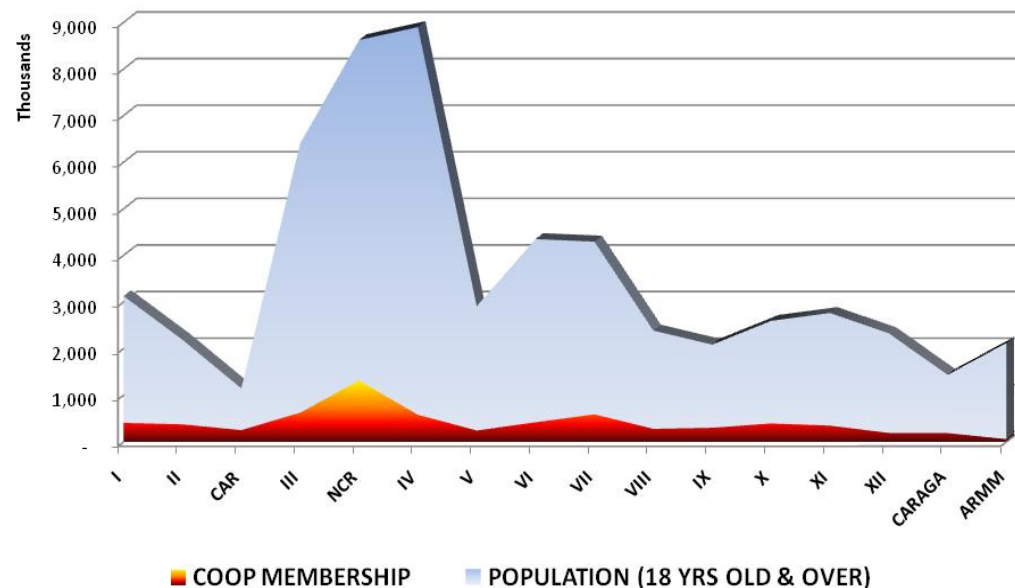
REGION	TOTAL MEMBERSHIP OF REGISTERED COOPERATIVES	TOTAL NUMBER OF REGISTERED COOPERATIVES	AVERAGE NUMBER OF MEMBERS PER COOPERATIVE	2007 HOUSEHOLD POPULATION (18 years old and over)	% OF COOP MEMBERSHIP VS. 2007 PHILIPPINE POPULATION OF 18 YEARS OLD AND OVER
	As of December 31, 2011	As of December 31, 2011			
I	405,514	1,259	322	2,720,727	14.90%
II	374,031	751	498	1,815,333	20.60%
CAR	250,622	701	358	893,900	28.04%
III	624,329	1,983	315	5,777,807	10.81%
NCR	1,313,340	2,087	629	7,305,688	17.98%
IV	580,002	2,423	239	8,319,308	6.97%
V	241,528	784	308	2,667,870	9.05%
VI	418,603	1,314	319	3,930,724	10.65%
VII	588,564	1,508	390	3,705,884	15.88%
VIII	277,543	661	420	2,108,578	13.16%
IX	300,457	732	410	1,784,227	16.84%
X	392,700	1,421	276	2,202,068	17.83%
XI	346,456	1,639	211	2,416,317	14.34%
XII	190,464	997	191	2,136,745	8.91%
CARAGA	187,337	1,033	181	1,249,672	14.99%
ARMM	56,490	1,208	47	2,065,219	2.74%
TOTAL	6,547,980	20,501	319	51,100,067	12.81%

Notes:

- * Excluding Secondary and Tertiary Cooperatives
- * Membership of Primary Coops Registered in the Central Office are distributed in their corresponding regions of operation

Approximately 12.81% of Philippine household population of 18 years old and over are cooperative members. The cooperative membership saturation is highest in Cordillera Administrative Region, followed by Region II.

Meanwhile, NCR contributed 20.06% to the 2011 Total Cooperative Membership.

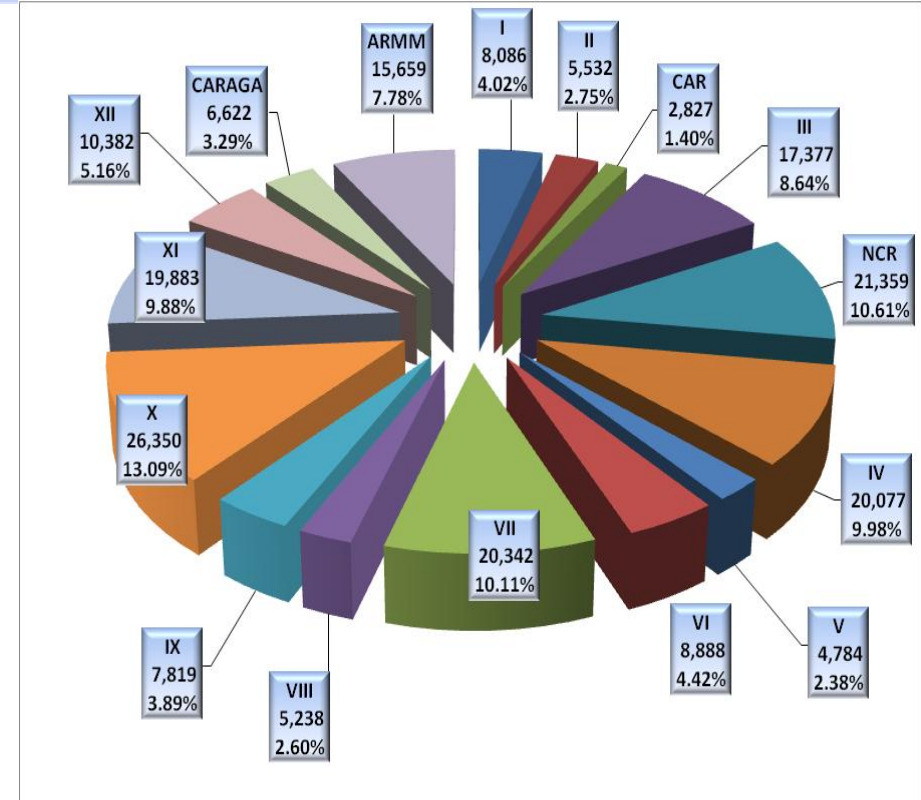


Source: www.census.gov.ph



EMPLOYMENT GENERATED BY COOPERATIVES
By Region
FY 2010

REGION	TOTAL NO. OF REGISTERED COOPERATIVES	TOTAL NO. OF PERSONS DIRECTLY EMPLOYED BY COOPERATIVES	AVERAGE NO. OF EMPLOYEES PER COOPERATIVE	TOTAL INDIRECT EMPLOYMENT GENERATED BY COOPERATIVES
	As of December 31, 2011	As of December 31, 2011		
I	1,274	8,086	6.35	5,676
II	761	5,532	7.27	3,883
CAR	714	2,827	3.96	1,985
III	2,012	17,377	8.64	12,199
NCR	2,137	21,359	9.99	14,994
IV	2,457	20,077	8.17	14,094
V	797	4,784	6.00	3,358
VI	1,336	8,888	6.65	6,239
VII	1,529	20,342	13.30	14,280
VIII	668	5,238	7.84	3,677
IX	743	7,819	10.52	5,489
X	1,443	26,350	18.26	18,498
XI	1,654	19,883	12.02	13,958
XII	1,007	10,382	10.31	7,288
CARAGA	1,046	6,622	6.33	4,649
ARMM	1,214	15,659	12.90	10,993
TOTAL	20,792	201,225	9.68	141,260



Cooperatives generated a total of 201,225 direct employment in 2010. Using the Sector Inverse Matrix (Input-Output Table) provided by the National Statistical Coordination Board (NSCB), a total of 141,260 indirect employment was derived.

NCR continued to contribute the largest share of 10.61% to the total direct employment generated by cooperatives.

Sources:

www.nwpc.dole.gov.ph
NSCB Sector Inverse Matrix

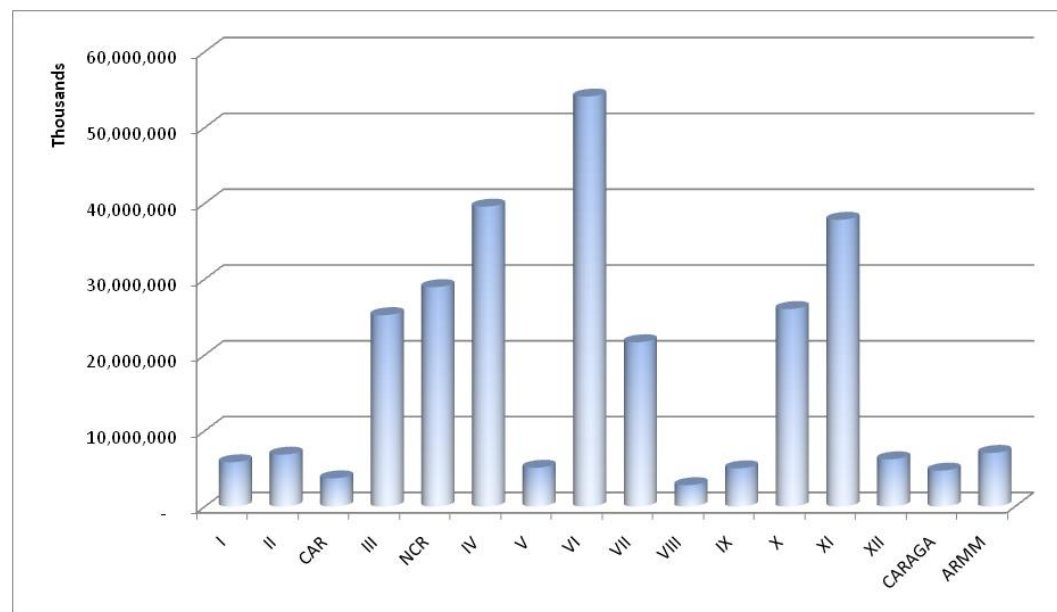


2010 COOPERATIVE CONTRIBUTION TO GROSS REGIONAL DOMESTIC PRODUCT
By Region
(At Constant 2000 Prices)

REGION	2010 COOPERATIVE REGIONAL DOMESTIC PRODUCT
	At Constant 2000 Prices
	(In Thousand Pesos)
I	5,844,069,063
II	6,852,736,673
CAR	3,723,002,219
III	25,250,930,927
NCR	28,948,699,349
IV	39,561,978,042
V	5,120,219,889
VI	54,085,393,226
VII	21,672,533,939
VIII	2,822,362,731
IX	5,043,835,834
X	26,054,642,104
XI	37,821,645,490
XII	6,233,920,984
CARAGA	4,748,640,369
ARMM	7,080,600,003
TOTAL	280,865,210,840.29

The entire cooperative sector in the Philippines contributed 3.12% to the 2010 Gross Domestic Product.

The average per capita contribution of cooperatives to its members is PhP 3,574.45/coop member/month.



Source: www.nscb.gov.ph

