



ISSUES ON DATA OF LABOR SERVICE COOPERATIVES

Current CDA Information Systems

- 1. Cooperative Registration Information System (COOPRIS)
 - Original Registration
 - 1. Amendment
 - 2. Status of Cooperative
 - 2. Cooperative Annual Progress Report Information System (CAPRIS)
 - 3. Cooperative Audited Financial Statements Information System (CAFSIS)
 - 4. Cooperative Members Information System (CMIS)

CDA DATA REQUIREMENTS FROM COOPERATIVES

- **Business Activities**
 - **Annual Volume of Business**
 - **Products and Commodities**
 - **Other Financial Services**
 - **Importation Activities**

Information on Number of Employees

Number of personnel receiving Salaries

CDA DATA REQUIREMENTS FROM COOPERATIVES

Information on Membership

Number of regular members

Number of associate members

Membership Composition

Age group of members

Branches and Satellites

Laboratory Coops

CDA DATA REQUIREMENTS FROM COOPERATIVES

Transactions to Members and Non-members

Information on Actual Taxes Withheld/paid

Affiliations

Information on the Utilization of CETF/CDF/optional
Fund

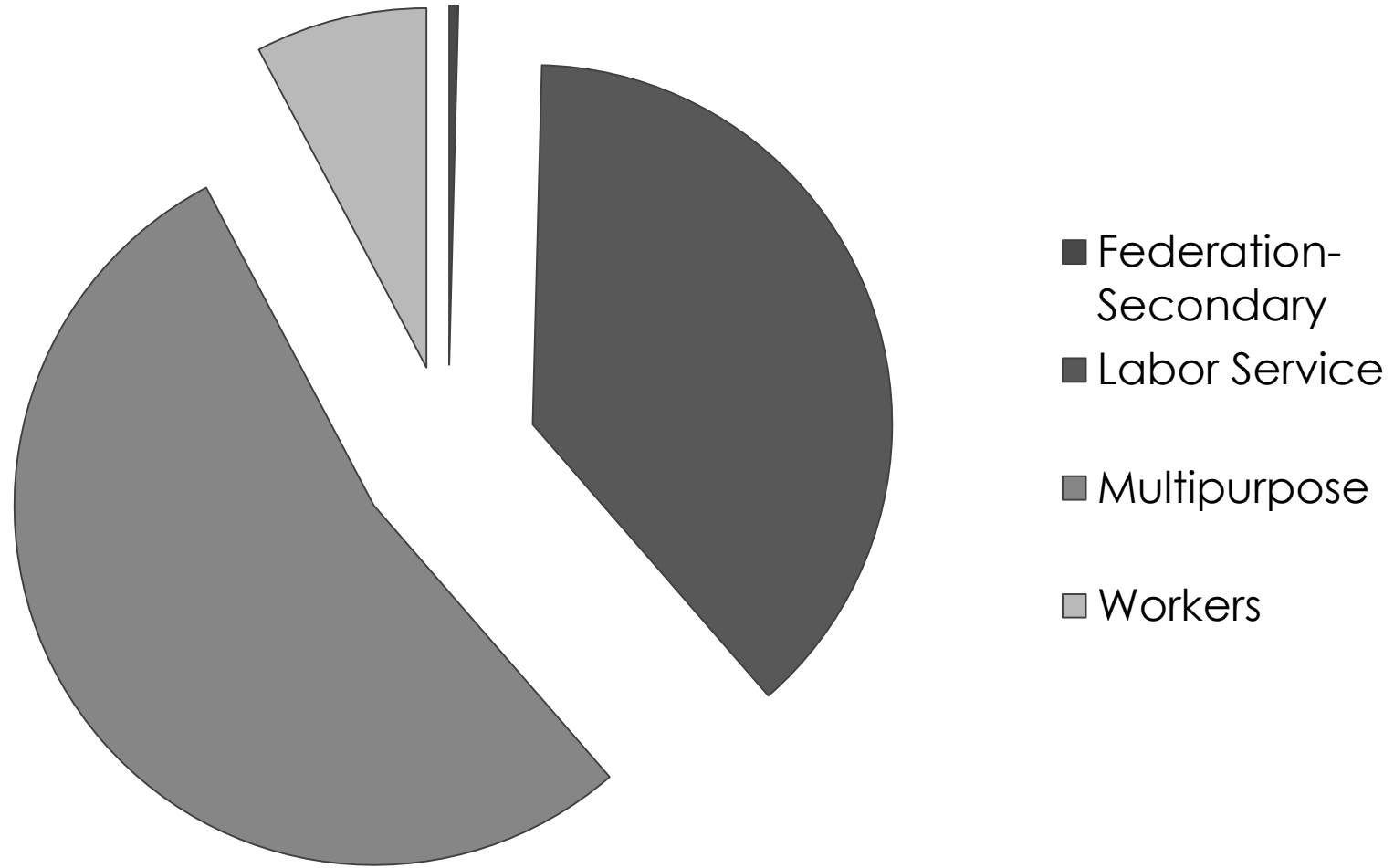
Risk Pooling Activities

**ALL FINANCIAL DATA FROM THE FINANCIAL
STATEMENTS**

CHALLENGES

- **Internet Access**
- **Minimal budget on systems development/IT infrastructure**
- **Lack of Personnel in updating of coop data in the newly developed system**
- **Members Information**
- **Incomplete Submission of Data**
- **Non-Submission of Reports/Non compliant Coops**

Cooperative Type



Sources of Data

- 246 Reporting cooperatives
- Source of data is the 2016 CAPR and AFS submitted to CDA in the year 2015



Total Assets
P6,687,486,951.92

**Number of
Members**
**233,893(58 % are
male, 42 % are
Female)**

**Direct Taxes
Contribution**
P3,379,776,515.11

**Total Volume of
Business**
P15,153,342,796.56

**ISC and PF
Payable**
P349,208,043.20

**Statutory
Reserves**
P569,515,769.03

Paid –up Capital
P1,584,049,599.79



Juan, married with 3 kids



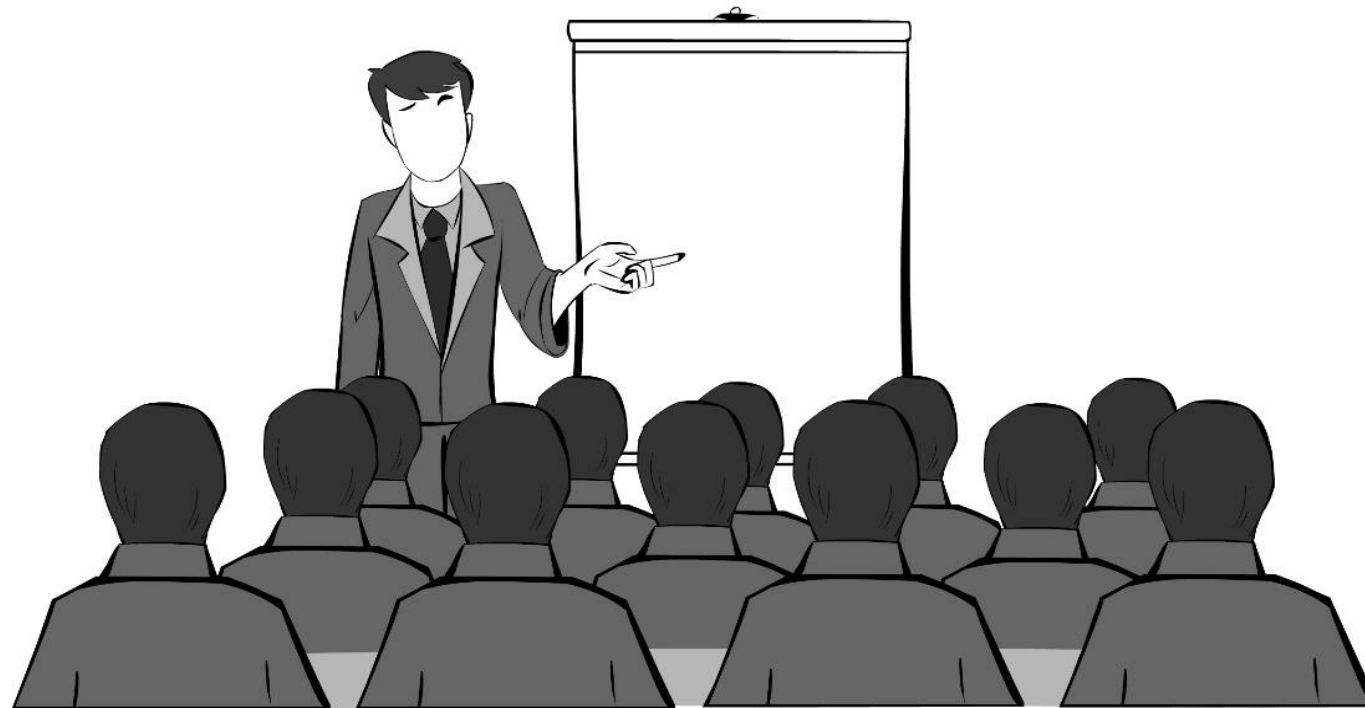
Pedro, married with 3 kids

ABC Manpower Agency



Juan





Pre-Membership Information Seminar

XYZ Labor Service Cooperative



Pedro

Share Certificate

[Company Name]

This is to certify that INSHAL NAVEED is the owner of ENERGY Corp. shares of 20 million stock of the ENERGY Corp. which are non-accessible, fully paid shares. The transfer of these shares must be done in accordance with the by-laws of the names corporation, in person, or by a duly appointed attorney or officer of the named corporation, and recorded in the books of the corporation.



Ownership

ABC Manpower Agency with
1000 employees



XYZ Labor Service Cooperative
with 1000 member employees



COMPARATIVE INCOME

Juan employed in a private Manpower Agency

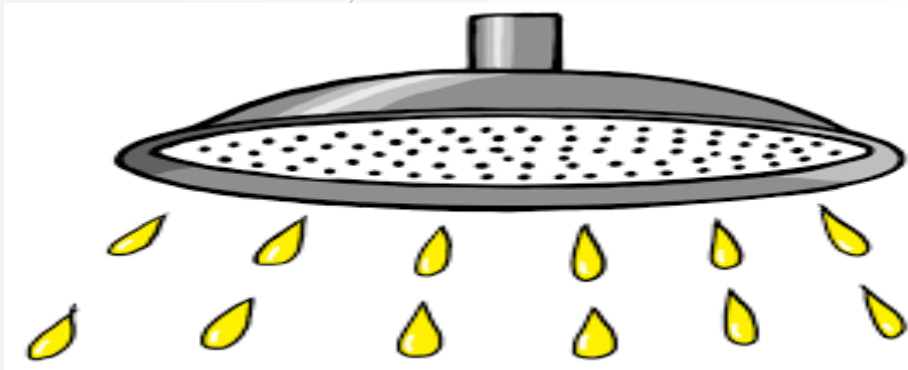
ABC Manpower Agency
with 1000 member-employee

Gross Revenues	1,000,000.00	
Less Expenses	800,000.00	
Net Income Subject to Tax	200,000.00	
Less Income Tax (30%)	60,000.00	
Net Income	140,000.00	to go to the owner

Pedro	employed in a Labor Service Coop	
Total Income of the Cooperative		
XYZ Labor Service Cooperative with 1000 member-employee		
Gross Revenues		1,000,000.00
Less Expenses		800,000.00
Net Surplus not subj. to tax		200,000.00
Less Statutory Fund (30%)		60,000.00
Net Surplus for distribution to members in the form of interest on capital and patronage refund		140,000.00
Intest of Share Capital		98,000.00
Patronage Refund		42,000.00
		140,000.00
Amount allocated for Share Capital		98,000.00
Total Ave Share Capital for 1000 members		1,200,000.00
Rate of Interest on Share Capital		8%
Amount allocated for Patronage Refund		42,000.00
Amount of Patronage		1,000,000.00
Rate of Patronage Refund		4%
Pedro's Share Capital in a year		2,400.00
Interest on Share Capital		192.00
Pedro's Patronage in the cooperative		2,400.00
Patronage Refund		96.00

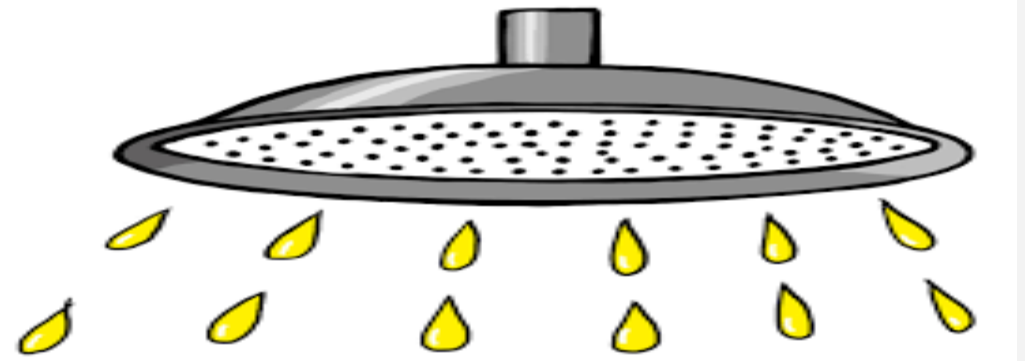
ABC Manpower Agency with
1000 employees

Net Income



XYZ Labor Service Cooperative
with 1000 member employees

Net Surplus



TAKE HOME PAY

Juan		
Basic Salary		153,192.00
Less: Mandatory Deduction		
SSS		5,667.60
Philhealth		1,800.00
Pag-ibig		1,200.00
Union Dues		1,200.00
Total Mandatory Deduction		9,867.60
Net Take Home Pay		143,324.40
Other Benefits from the company		
NONE		

Pedro		
Basic Salary		153,192.00
Less: Mandatory Deduction		
SSS		5,667.60
Philhealth		1,800.00
Pag-ibig		1,200.00
Share Capital		1,200.00
Total Mandatory Deduction		9,867.60
Net Take Home Pay		143,324.40
Other Benefits from Coop		
Interest on Share Capital		
Patronage Refund		
Trainings		



PEDRO







Community Development Services



PEDRO



**Working Conditions and Social Welfare Benefits
Committee**



GENERAL ASSEMBLY MEETING





A decorative graphic on the left side of the slide. It features a thick grey arrow pointing right, positioned above several thin, curved black lines that sweep upwards and to the right. The background is a light grey gradient.

Thank You